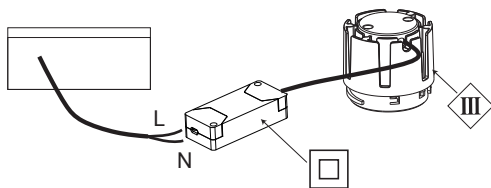


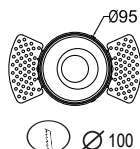
DEEP\_EVO T\_LESS GRANDE (BIG)  
DEEP\_EVO T GRANDE (BIG)  
DEEP\_EVO Q GRANDE (BIG)

# LOGICA

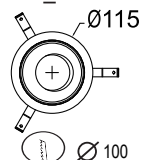
AC220-240V  
~ 50/60Hz



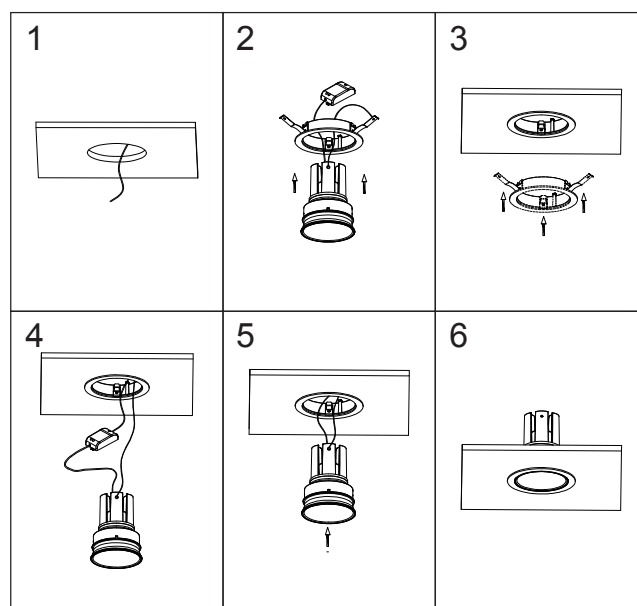
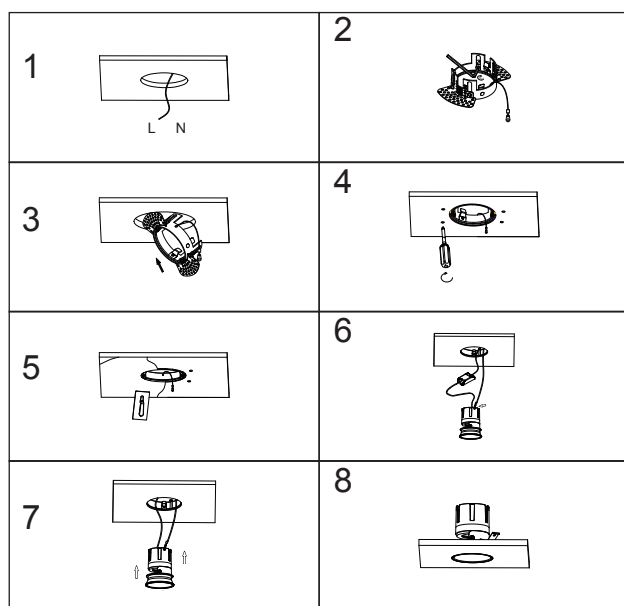
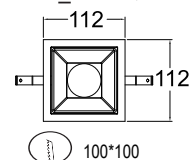
DEEP\_EVO T\_LESS



DEEP\_EVO T



DEEP\_EVO Q





Togliere tensione prima dell'installazione o qualsiasi manutenzione .

L'installazione e la manutenzione devono essere affidate a personale qualificato e devono essere eseguite conformemente alle prescrizioni delle vigenti normative impianti .

Disconnect the power supply before installation or any maintenance work .

Installation and maintenance must be carried by qualified personnel and according to the current Directives on electrical systems .

Il simbolo  riportato sull'apparecchio indica che il prodotto deve essere smaltito in modo differenziato dai rifiuti urbani.

This symbol  shown on the device indicates that the product must be disposed of in a way which differs from the standard urban rubbish.



LOGICA è un marchio



MARINO CRISTAL SPA  
Via Guardia del Consiglio, 31  
47899 Serravalle Repubblica di San Marino

